

## Welcome

Thank you for purchasing this product. Please read this manual thoroughly before use and retain it for future reference. We are confident you will enjoy this product and its many functions.

## About the product

This PowerBankUnit is a dedicated component block of **iBeamBLOCK**, designed to be stacked under and supply power to the Projector. It can also function as a backup power bank for mobile devices via the USB port.

## Safety Notice

1. Keep the device and packaging materials out of the reach of infants and children.
2. Avoid subjecting the power adapter and other contacts to dripping or splashing water and dry your hands before you use it. Do not place objects filled with liquids such as vases, etc. on or near the device.
3. Make sure that the used power outlet is always readily available and never hidden. In case of emergency, use the power adapter to separate the device from the power network.
4. Keep your device away from all flames such as candles and do not set them up in the vicinity of the device.
5. Keep the unit at least 10 cm away from other objects. Make sure the ventilation is not covered by newspapers, tablecloths, curtains, etc.
6. For your own safety, do not use the projector during thunderstorms or lightning.
7. Relative Humidity is 20% ~ 80%, non-condensing.
8. The battery is integrated with the device. Do not disassemble and modify. The battery should be replaced by an authorized service center only.
9. Ensure that the ambient room temperature is within 5 ~ 35°C.
10. Wait before using if the device has been moved from a cold location into a warm one. Any condensation that has formed may in certain circumstances destroy the device. As soon as the device has reached room temperature it can be used without risk.
11. Handle the product with care. Avoid contact with sharp objects. Keep device away from metallic objects.

12. Do not drop or disassemble the product otherwise the warranty voids. Opening or removing covers may expose you to dangerous voltage or other hazards. Refer all servicing to an authorized service center.
13. Both product and user's manual are subject to further improvement or supplement without further notice.



The CE marking certifies that the product meets the main requirements of the European Parliament and Councils directives EN55022/EN55024/EN60950/EN62133 on information technology equipment, regarding safety and health of users and regarding electromagnetic interference.

The declaration of compliance can be consulted on the site [www.aiptek.de](http://www.aiptek.de).



**Packaging:** The presence of the logo (green dot) means that a contribution is paid to an approved national organisation to improve package recovery and recycling infrastructures. Please respect the sorting rules set up locally for this kind of waste.

**Batteries:** If your product contains batteries, they must be disposed of at an appropriate collection point.



The crossed-out waste bin stuck on the product means that the product belongs to the family of electrical and electronic equipment. In this respect, the European regulations ask you to dispose of it selectively;

- At sales points in the event of the purchase of similar equipment.
- At the collection points made available to you locally (drop-off center, selective collection, etc.).

In this way you can participate in the re-use and upgrading of Electrical and Electronic Equipment Waste, which can have an effect on the environment and human health.

The paper and cardboard packaging used can be disposed of as recyclable paper. Have the plastic wrapping recycled or dispose of it in the non-recyclable waste, depending on the requirements in your country.

## FCC Compliance Statement:

This device complies with Part 15 of the FCC Rules. Operation is subjected to the following two conditions:

(1) this device may not cause harmful interference, and (2) this device must accept any interference received, including interference that may cause undesired operation.

This equipment has been tested and found to comply with limits for a Class B digital device, pursuant to Part 15 of the FCC rules. These limits are designed to provide reasonable protection against harmful interference in residential installations. This equipment generates, uses, and can radiate radio frequency energy, and if not installed and used in accordance with the instructions, may cause harmful interference to radio communications. However, there is no guarantee that interference will not occur in a particular installation. If this equipment does cause interference to radio or television equipment reception, which can be determined by turning the equipment off and on, the user is encouraged to try to correct the interference by one or more of the following measures:

- Reorient or relocate the receiving antenna.
- Move the equipment away from the receiver.
- Plug the equipment into an outlet on a circuit different from that to which the receiver is connected.
- Consult the dealer or an experienced radio/television technician for additional suggestions.

For product available in the USA/Canada market, only channel 1~11 can be operated. Selection of other channels is not possible.

This device and its antennas(s) must not be co-located or operating in conjunction with any other antenna or transmitter except in accordance with FCC multi-transmitter product procedures.

## FCC Radiation Exposure Statement:

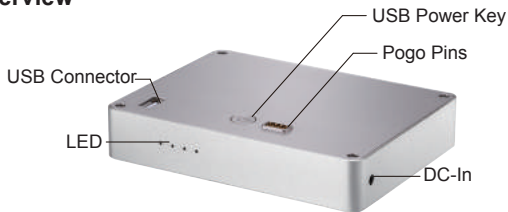
This equipment complies with FCC radiation exposure limits set forth for an uncontrolled environment. This equipment should be installed and operated with minimum distance 20cm between the radiator & your body.

All cables used to connect peripherals must be shielded and grounded. Operation with cables connected to peripherals that are not shielded and grounded may result in interference to radio and television reception.

You are cautioned that any change or modifications to the equipment not expressly approved by the party responsible for compliance could void your authority to operate such equipment.



## Overview



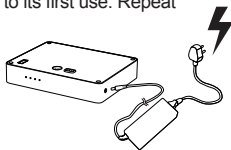
## Getting Started

### Charging the Power Bank

Please charge the Power Bank for 8 hours prior to its first use. Repeat charging will take around 4 hours.

The PowerBankUnit features a built-in Lithium-ion battery which can only be charged when the PowerBankUnit is not in use (The stacked projector is powered-off or the PowerBankUnit is not stacked).

Connect one end of the supplied power adapter bundled, into the DC IN jack and the other end to a power outlet to initiate charging.



### LED Indicator

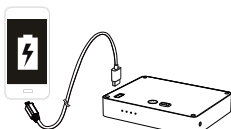
During charging, the LED indicator lights will flash. When the battery is fully charged, the LED indicator lights will appear solid blue.

### Supplying Power to the Projector

1. When stacking the Projector to the PowerBankUnit, the LED lights will indicate the current power capacity. If the projector is powered-off, LED lights will automatically turn off after 5 seconds.
2. If the LED Lights appear to be flashing, this indicates the battery capacity is too low to operate the Projector. In this case, you will need to charge the PowerBankUnit immediately.

## Charging a Mobile Device

The PowerBankUnit can also charge your mobile devices via USB.



1. Connect your mobile device to the PowerBankUnit via the USB cable with the type A connector end plugged into the USB port located at the top of PowerBankUnit.
2. When the PowerBankUnit is powered on, charging of your device will begin automatically.

**Note:** The PowerBankUnit provides 5V/2A output power for charging mobile devices.

## Specifications PB-120

Item	Description
DC-in	12V, 3.5A
DC-out	USB: 5V, 2A Pogopin: 11V/3A
Battery Type	Embedded 3.7V / 13200 mAh Lithium-ion battery
Battery Power	Up to 120 min projection
Dimensions ( L x W x H )	125*95*30mm(4.92"x3.74"x1.18")
Weight	405g / 14.29oz
Humidity	20 – 80%, 80% (Max.), non-condensing.
Operating Temperature	5°C – 35°C